



A stylized, dark blue map of the Greater Kansas City region, showing a network of roads and highways. The map is centered on the city of Kansas City, with major roads radiating outwards. The text is overlaid on the map.

NUCA of Greater Kansas City Region

DANNY ANDERSON, President











SOUTH
LOOP
PROJECT





DOWNTOWN KANSAS CITY BALLPARK

12TH & CHERRY

PENDULUM



June 16 – July 11
4 Group-stage games
1 Round of 32 Match
1 Quarter-Final





#WeDigKC

NUCA of Greater Kansas City Region is the only regional association devoted solely to utility contractors and associated industry companies. We represent local utility and excavation contractors and suppliers who build and maintain the complex network of water, wastewater, energy, and communications infrastructure.



SPECIAL THANKS TO OUR SPONSORS



PLATINUM SPONSORS



GOLD SPONSORS



SILVER SPONSORS

CONTRACTOR SOLUTIONS

EMERY SAPP & SONS

GENESIS ENVIRONMENTAL SOLUTIONS, INC.

NATIONAL TRENCH SAFETY

MCWANE DUCTILE

OLSSON

OLATHE WINWATER



Proceeds benefit Mid-America Assistance Coalition.
An organization advocating on behalf of low-income
utility customers.





2024 Washington Summit

Digging America's Future

May 22 – 23, 2024

Hyatt Regency Capitol Hill





Where kids Drive!





TONY PRIVITERA
National Board President

NUCA of Greater Kansas City Region
Founding Member and Director Emeritus



DOUG CARLSON
NUCA National CEO



**1st District At-Large
Kansas City, Missouri**

COUNCILMAN KEVIN O'NEILL



City of Kansas City, Missouri

PUBLIC WORKS

Nicolas Bosonetto, City Engineer



PW Organization

Director of Public Works, Michael J. Shaw

Director of Transportation, Jason Waldron

Deputy Director of Operations, Rachelle Cornelius

City Engineer, Nicolas Bosonetto

Assistant Director, Jolita Hatcher

Chief Financial Officer, Heather Cater

Executive Assistant, Cynthia Jackson

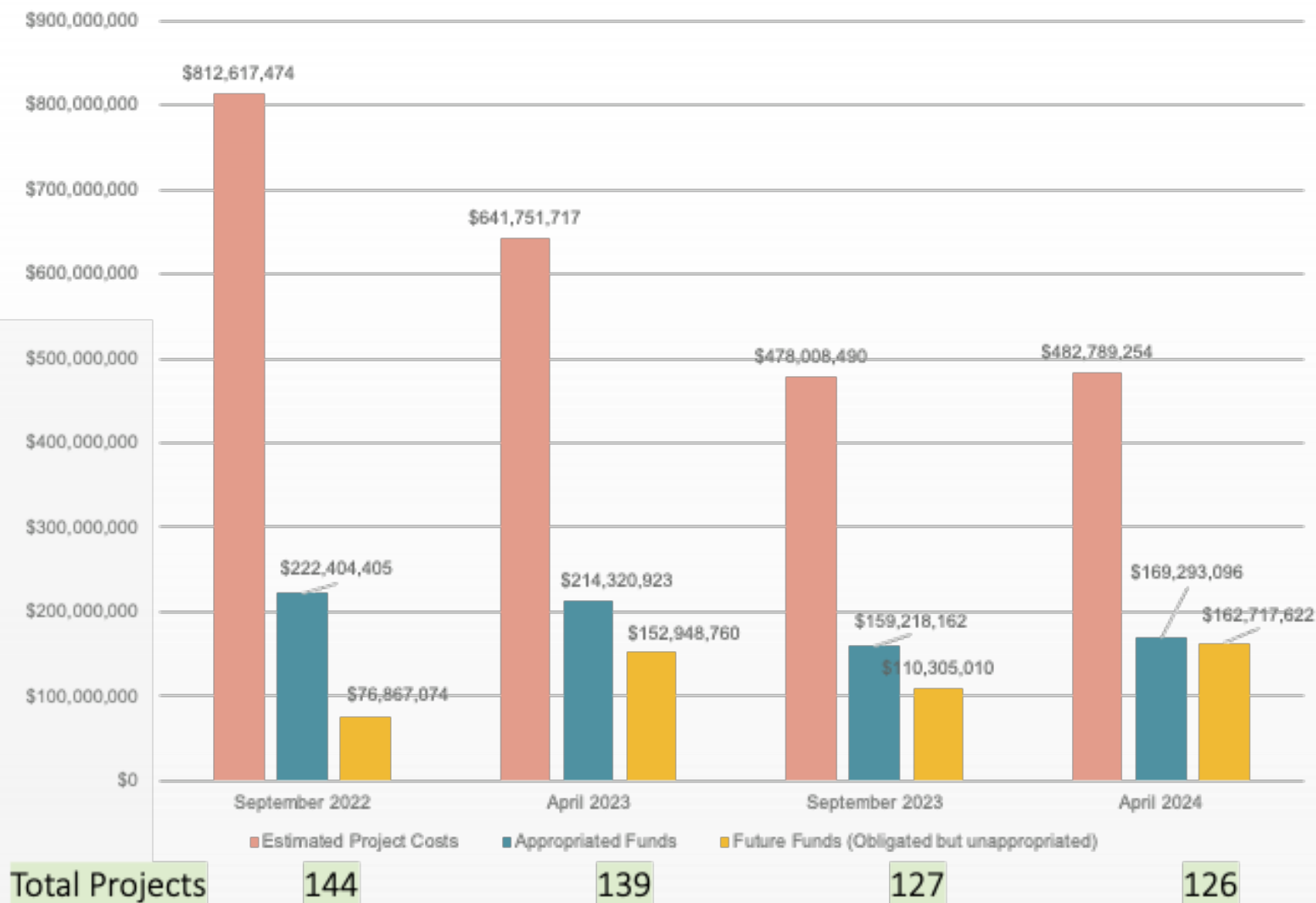
Engineering Division Project Backlog

- 126 Projects Total
- 96 Projects in design phase
- 30 Projects under Construction
- \$482M in project backlog
- \$332M in secured funding
- \$150M estimated shortfall



KANSAS CITY
Public Works

Project Backlog



FY24 Projects Bid – Development Projects

Barney Allis Plaza

- Estimated Contract Value \$120,000,000
 - Design/Build
 - RFP/Bid date - 2024

South Loop Lid

- Estimated Contract Value \$100,000,000
 - Design/Build
 - RFP/Bid date – 2024

N. Mexico City Avenue Extension

- Estimated Contract Value \$8,000,000
 - New Roadway Construction
 - Utilities
 - Bid date – Spring 2024
 - Hunt Midwest Project

NW 132nd/NW 136th Extension

- Estimated Contract Value \$4,900,000
 - New Roadway Construction
 - Utilities
 - Bid date – Fall/Winter 2024
 - Hunt Midwest Project

FY24 Projects Bid – Development Projects

Somora Road (West Bottoms)

- **Infrastructure Project -
Estimated Contract Value
\$18,000,000**
 - Bid date – Spring 2024
- **Streetscaping Project –
Estimated Contract Value
\$8,000,000**
 - Bid date – Summer 2024



BIP Grant - Leveraging Funds



KANSAS CITY
Public Works

Bridge #	Bridge	Project Number	Cost Request for Grant	Local Funds Programmed	Notes
1	*112th Street over Fishing River	89008835	\$3,946,391	\$2,000,000	Preliminary Plans - 20%
2	*NE Pleasant Valley over Big Shoal Creek	89008254	\$2,407,098		Plans 90% complete
3	*12th Street over Big Blue River	none	\$7,999,435		10%
4	*Bellevue Avenue over Brush Creek	none	\$2,849,812		10%
5	*Roanoke Parkway over Brush Creek	none	\$4,020,468		10%
6	*Benton Boulevard over Brush Creek	89005590	\$8,162,131	\$4,000,000	In Final Design
7	*Elmwood Avenue over Brush Creek	none	\$4,856,908		10%
8	*Gregory Boulevard over Big Blue	89008587	\$14,567,761	\$9,879,339	Plans 100% complete
9	*Hillcrest Road over Small Creek	89005583	\$1,108,564	\$300,000	Plans 100% complete, large culvert
		TOTAL	\$49,918,568	\$16,179,339	
	*Cost estimates from "Bridge Cost Estimate" spreadsheets	Match Funding Required (20%)	\$9,983,714	38%	GO Bond savings
		BIP Grant Request (80%)	\$39,934,854		

FY24 Projects Bid – Bridges

Byrams Ford

- Estimated Contract Value \$2,500,000
 - MoDOT Funds
 - Fall 2024
 - Concrete Box Beam
 - Estimated 1 years construction

Raytown Rd over Lumpkins

- Estimated Contract Value \$3,000,000
 - MoDOT Funds
 - Fall 2024
 - Estimated 1 years construction
 - Prestressed Concrete Girder

Grand Blvd over RR

- Estimated Contract Value \$10,000,000
 - GO Bond Funds, Federal Funds
 - New Pedestrian Bridge
 - Fall 2024 Bid Date estimated
 - Pending various grants applications
 - Estimated 1.5-2 years construction



FY24 Projects Bid – Sidewalks & Paving

Sidewalk Program

- Estimated Contract Value \$35,000,000
 - Summer 2024

Resurfacing Program

- Estimated Contract Value \$37,500,000
 - Summer 2024



FY24 Projects Bid

23rd Street Reconstruction

- Estimated Contract Value \$5,000,000
 - GO Bond Funds
 - Bid Date Fall 2024
 - Estimated 1.5 - 2 years construction
- Scope
 - New waterline
 - Sidewalk construction
 - Roadway reconstruction
 - Building demolition

18th & Vine Pedestrian Mall

- Estimated Contract Value \$4,400,000
 - Federal Funds
 - Bid Date Summer 2024
 - Estimated 1.5 years construction
- Scope
 - Roadway reconstruction
 - Pedestrian Amenities



KANSAS CITY
Public Works

FY24 Projects Bid

NE Vivion Road

- **Estimated Contract Value \$5,000,000**
 - MoDOT, GO Bond Funds
 - Bid Date Fall 2024
 - Estimated 1.5 years construction
- **Phase I – Highland to Antioch**
 - Shared use path on north side of roadway
 - Drainage improvements

Front Street – Choteau to Universal

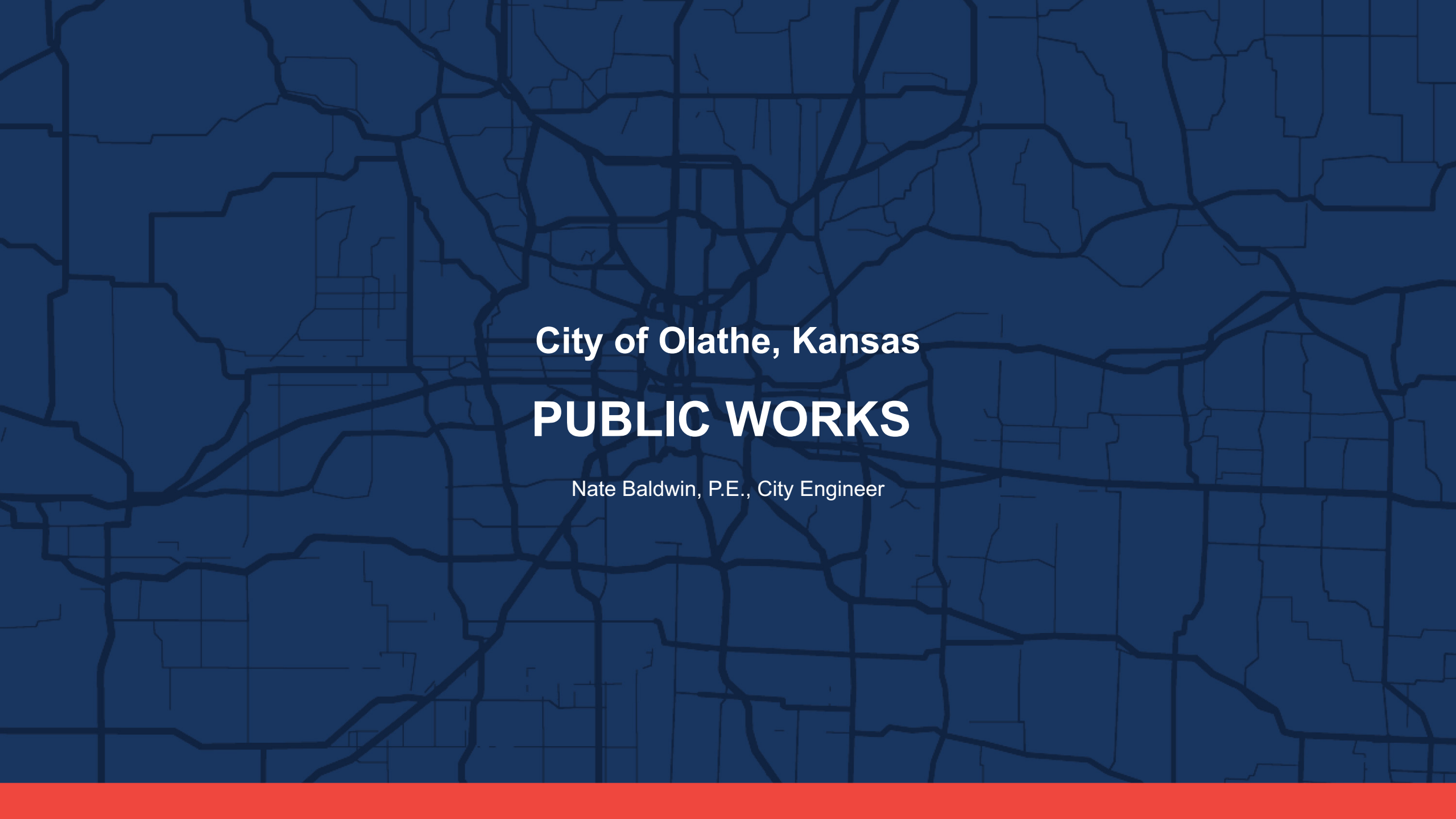
- **Estimated Contract Value \$11,000,000**
 - Federal Funds, GO Bond Funds
 - Bid Date probably late 2024
 - Estimated 2 years construction
- **Probably will be bid as Phase I and alt bid Phase II**
 - **Phase I – Choteau to Topping**
 - Roadway reconstruction
 - Sidewalk construction
 - Traffic Signal
 - Water main replacement and stormwater

Questions?

Nicolas Bosonetto, nicolas.bosonetto@kcmo.org



KANSAS CITY
Public Works

The background of the slide is a dark blue map of Olathe, Kansas, showing a network of roads and highways. The map is centered on the city area, with major roads like I-490 and I-20 visible. The text is overlaid on the map.

City of Olathe, Kansas

PUBLIC WORKS

Nate Baldwin, P.E., City Engineer



City of Olathe, KS Public Works



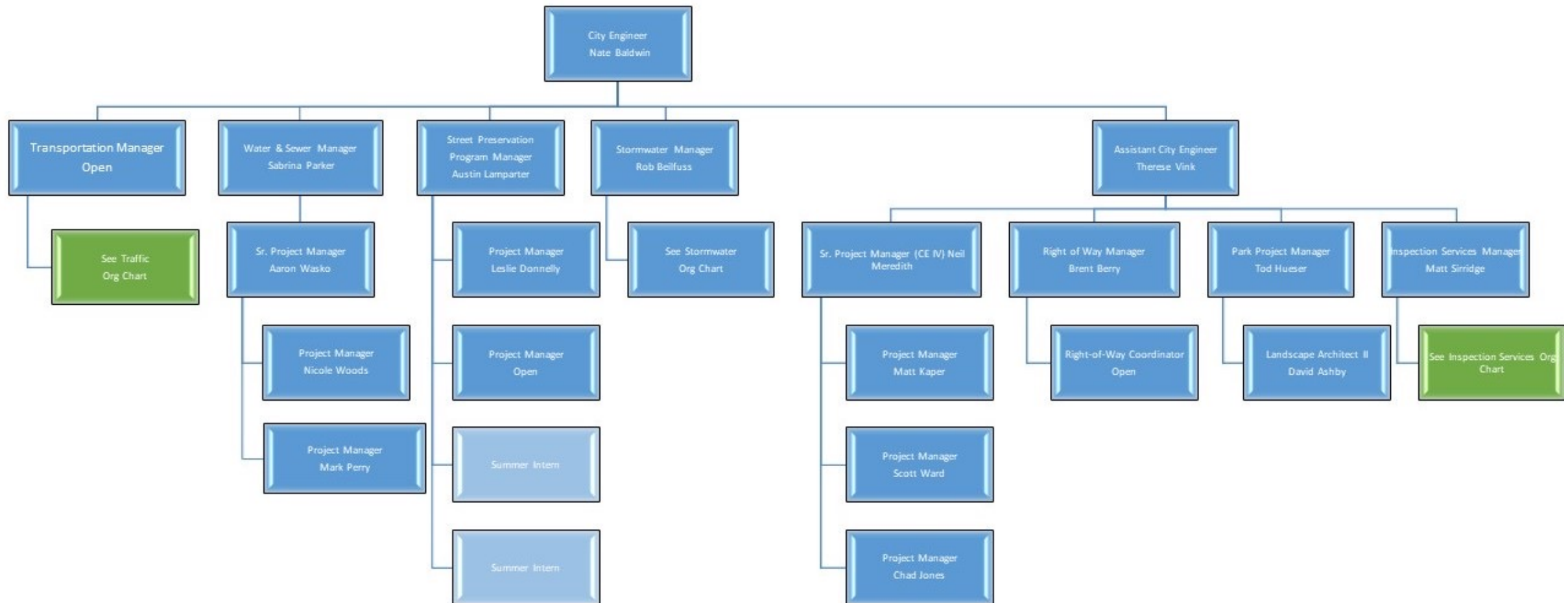
Nate Baldwin, P.E.

City Engineer

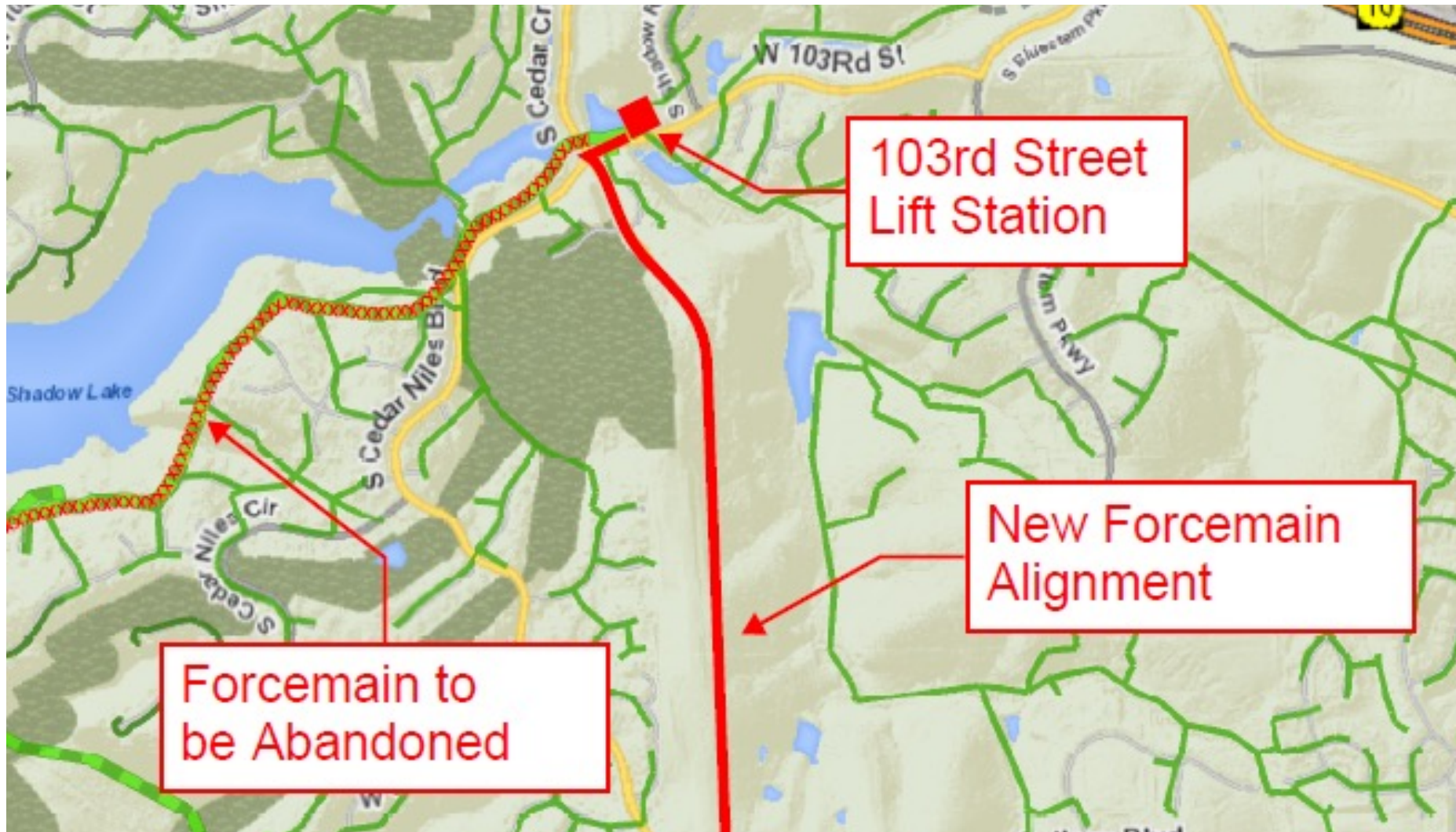
May 8, 2024



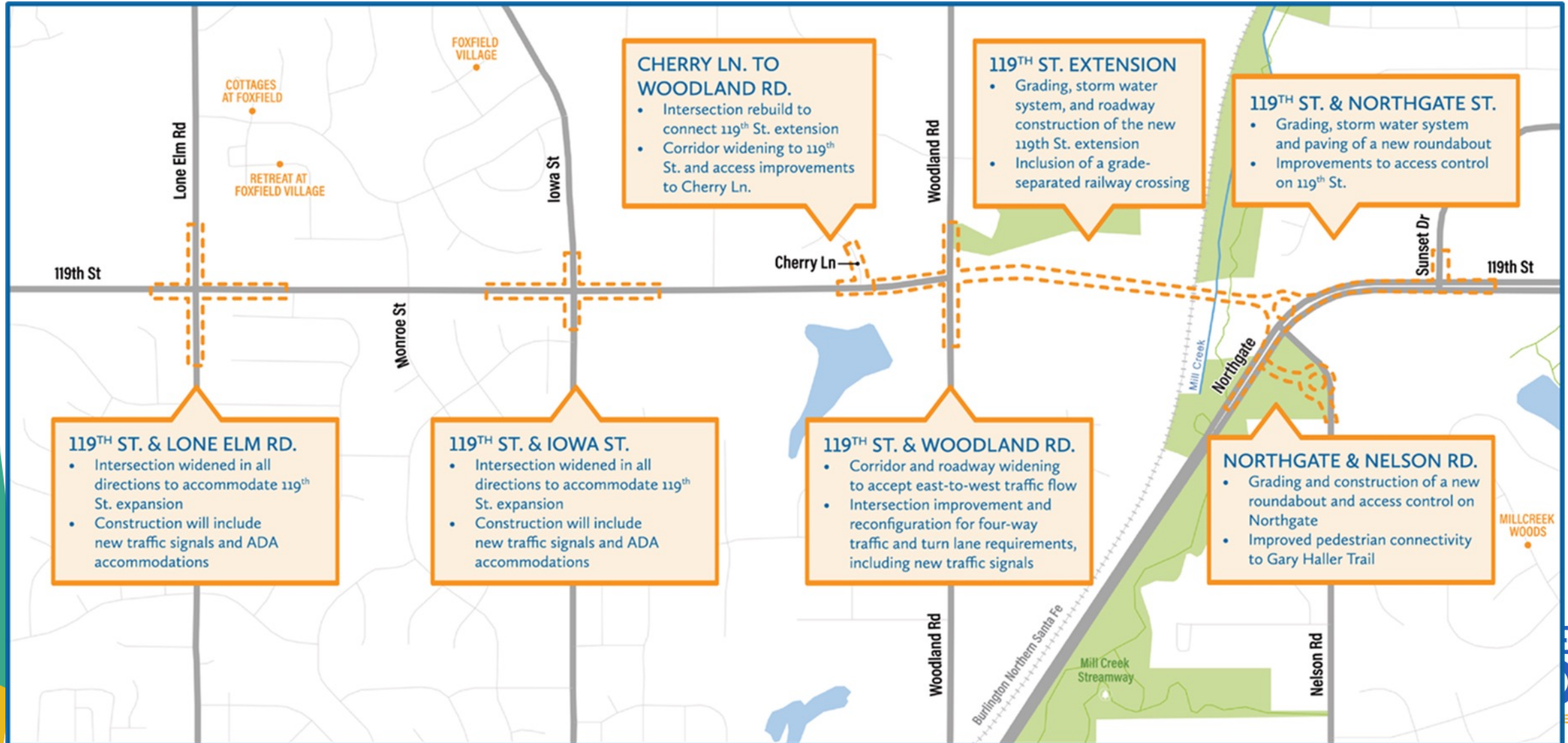
Engineering Department



103rd Street Lift Station and Forcemain

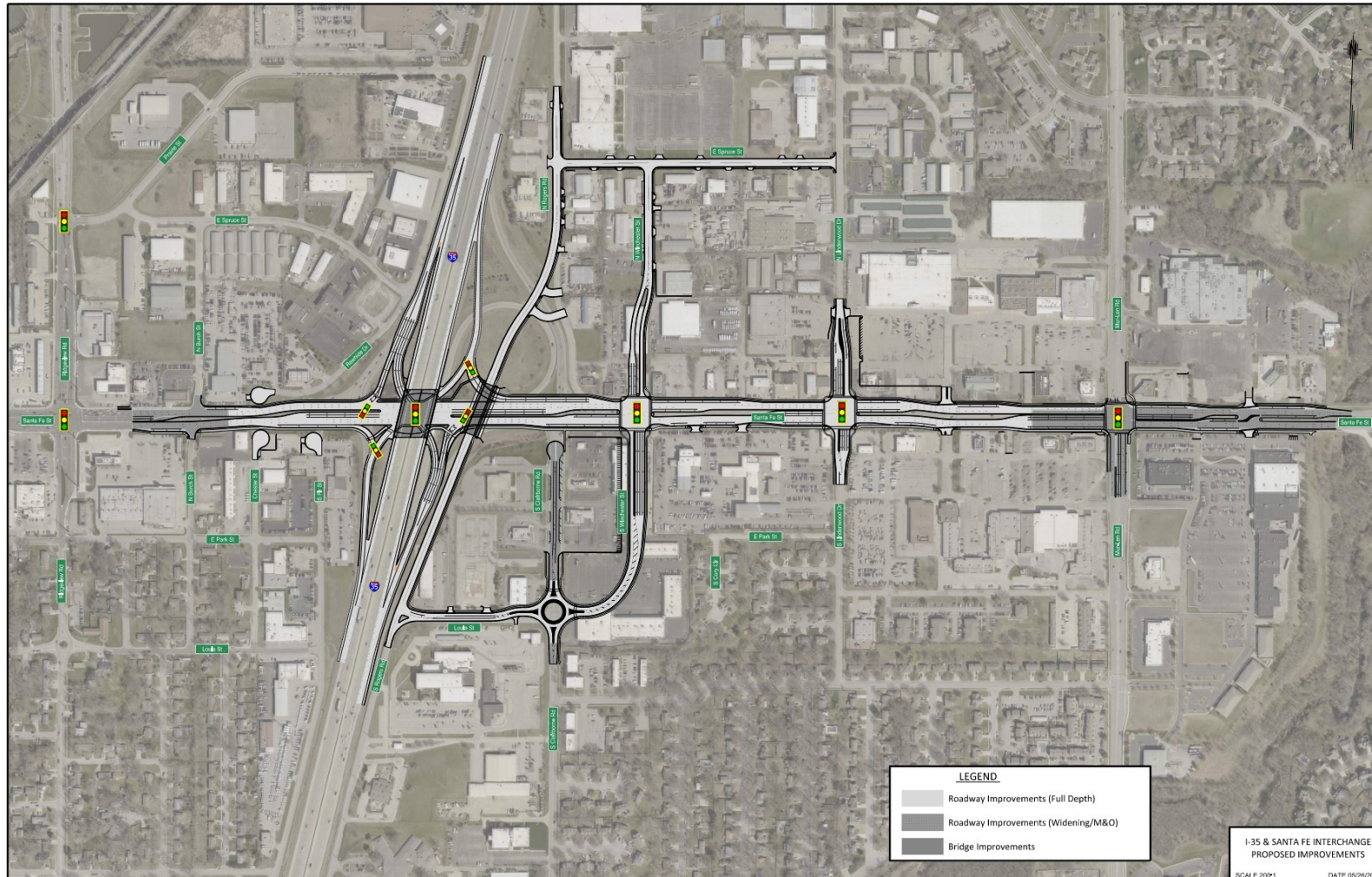


119th Street, Woodland to Northgate





Santa Fe, Ridgeview to Mur-Len





Johnson County Wastewater INTEGRATED PLANNING

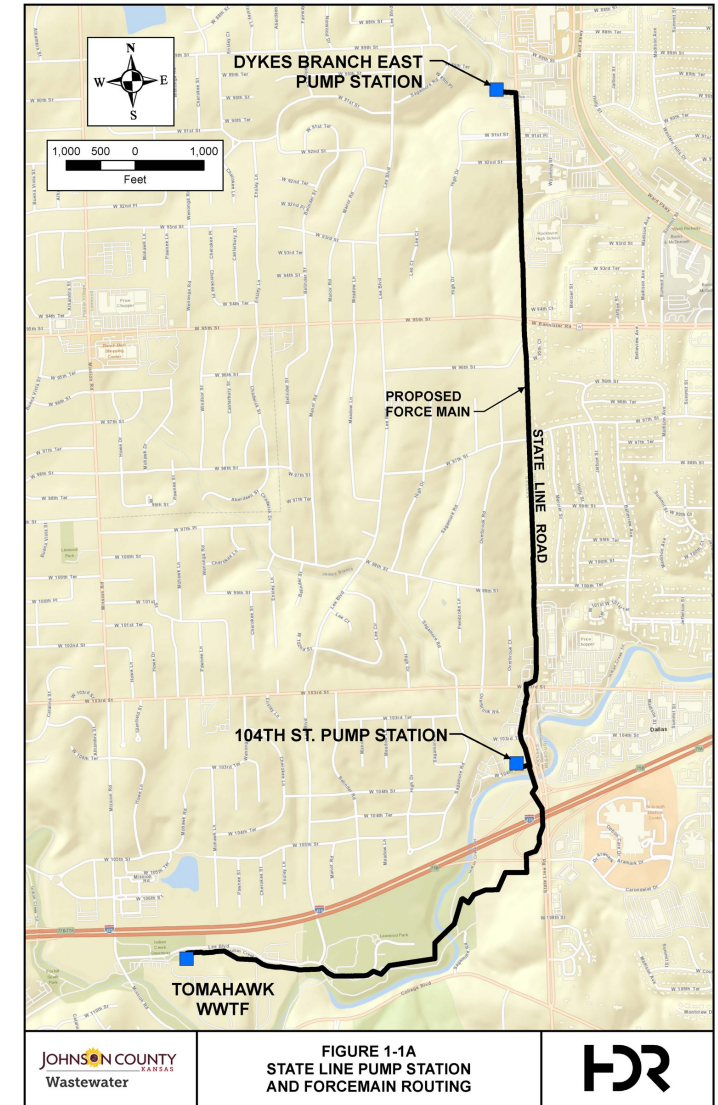
Tami Lorenzen, Assistant Chief Engineer

Johnson County Wastewater Upcoming Capital Projects

May 8, 2024

Upcoming Bidding Opportunities on JCW Capital Projects – 2024 Bid Opportunities

- State Line Road Pump Stations and Forcemain
 - 2 New Pump Stations and Forcemain
 - Pump stations, piping, site work, road restoration
 - Crossings under Indian Creek and I-435
 - Two bid packages
 - Pump stations and sitework
 - Forcemain and road restoration
 - Approximately \$40M total project estimate
 - Advertising – June 2024
- <https://www.jcwprogram.com/stateline>



Upcoming Bidding Opportunities on JCW Capital Projects – 2024 Bid Opportunities

- Blue River WWTF Phase 2 Improvements
 - Screening and Grit
 - Pump Replacement
 - UV Disinfection Equipment
 - DAF Repair and UWAS Tank
 - Misc. Site Improvements
- Approximately \$17M total project estimate
- Bidding December 2024

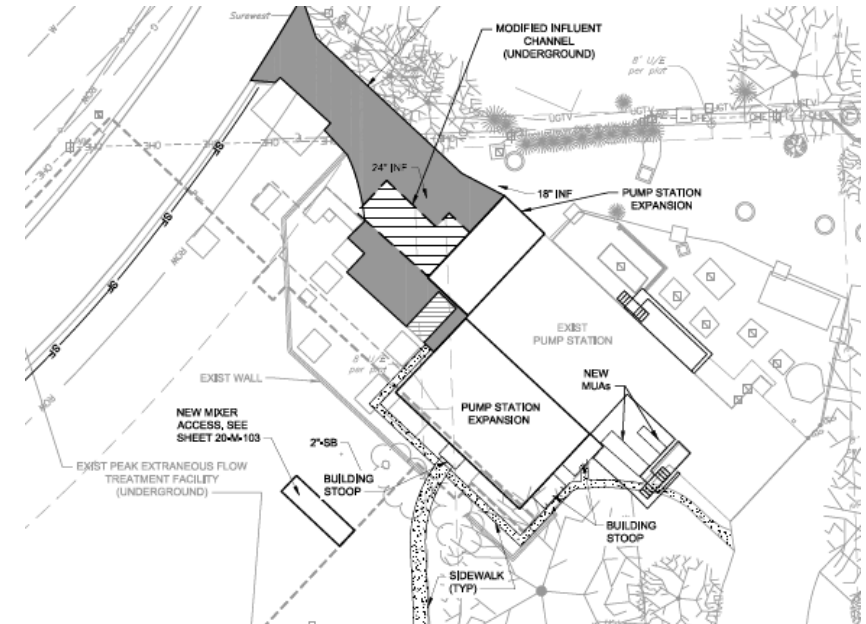
<https://jcwprogram.com/contractor-services>



Upcoming Bidding Opportunities on JCW Capital Projects – 2025 Bid Opportunities

- Belinder Pump Station Renewal Improvements
 - Building expansion for new equipment and screening
 - Electrical improvements and new electrical room
 - Pumping improvements
 - Screening improvements
 - Chemical system improvements
- Approximately \$20M total project estimate
- Bidding May 2025

<https://jcwprogram.com/contractor-services>



Upcoming Bidding Opportunities on JCW Capital Projects – 2024/25 Bid Opportunities

■ Other Upcoming Project Locations:

- Dyke's Branch Pump Station – near 83rd St & Mission Rd
- New Century Air Center WWTF Improvements – near I-35 and 159th St.
- Lone Elm Pump Station & Forcemain – near 183rd St and Lone Elm Rd
- Blue River 28 CD 1 Sewer Extension – near 175th St and Pflumm Rd
- Sanitary Sewer Collection System Rehab & Repair – system wide

To register and receive notices of electronic bid opportunities:

<https://www.Jocogov.org>

For regular updates on upcoming JCW projects:

<https://jcwprogram.com/contractor-services>

Johnson County Wastewater Upcoming Capital Projects

- Tami Lorenzen, P.E. Assistant Chief Engineer, JCW
Integrated Plan Program Manager
 - Tamara.Lorenzen@jcw.org



City of Kansas City, Missouri

KC WATER

Andy Shively, Deputy Director



Total FY25 Spend: \$503.4 million

Water

- Design: \$19.4m
- Construction: \$115.5m
- Alternative Delivery: \$27m
- Operations: \$12.2m
- **Total: \$174.1 million**

Wastewater

- Design: \$48.8m
- Construction: \$200.8m
- Alternative Delivery: \$73.2m
- Operations: \$6.5m
- **Total: \$329.3 million**

Water

Design

- Water Pump Station BIM Modeling
- Turkey Creek Pump Station Rehabilitation
- SCADA Control Room Renovation and Operations Relocation
- Water Main Replacements

Construction

- NE Shoal Creek Parkway from NE 76th St to Missouri Highway 152 Transmission Main
- Water Main Replacements

Alt Delivery:

- Water Treatment Plant Service Piping Replacement D/B

Wastewater

Design

- 87th Street Pump Station Screen Evaluation
- Westside WWTP Headworks
- Plattewoods Pump Station Rehabilitation
- Ammonia Sensitivity Mussel Study

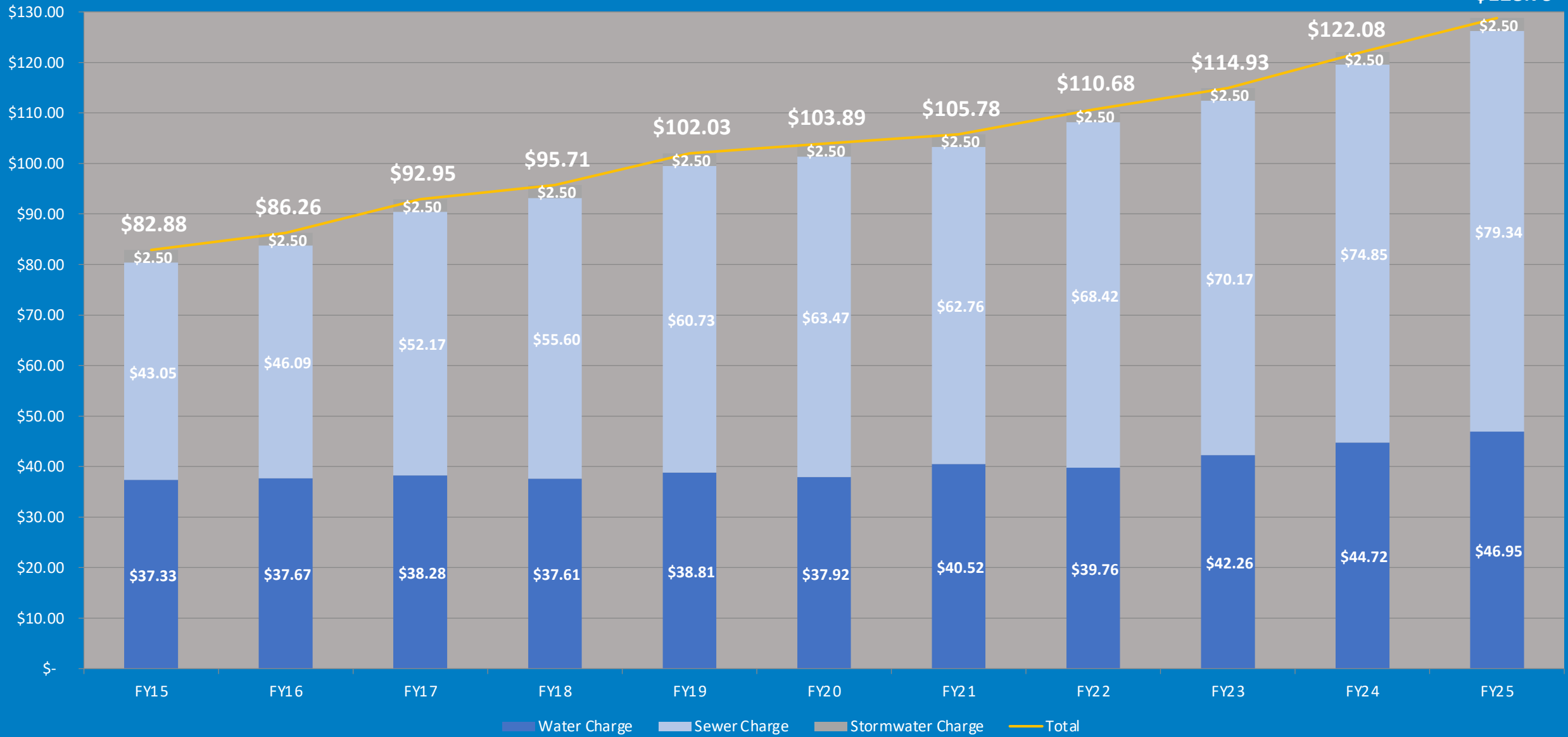
Construction

- OK Creek Gates Bending Weir
- Weatherby Lake/Upper Rush Pump Station Upgrade
- Todd Creek WWTP Expansion and Major Upgrade projects

Alt Delivery:

- Westside WWTP Sludge Screening D/B
- Blue River WWTP Grit Removal and Fine Screens D/B

Average Monthly Residential Bill based on Actual Usage (FY2014 - FY2025 est)

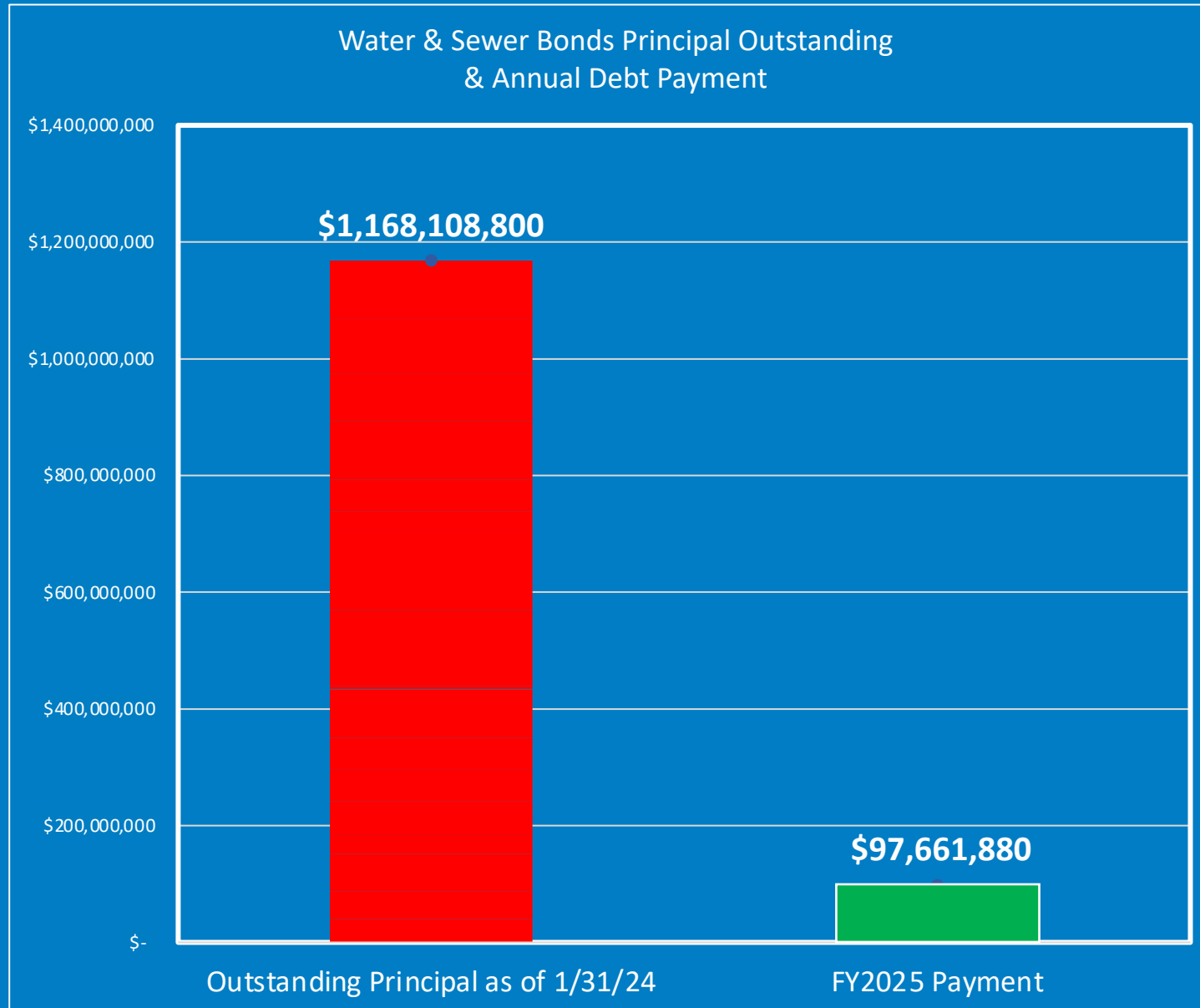


Same Jaden, same 🤔



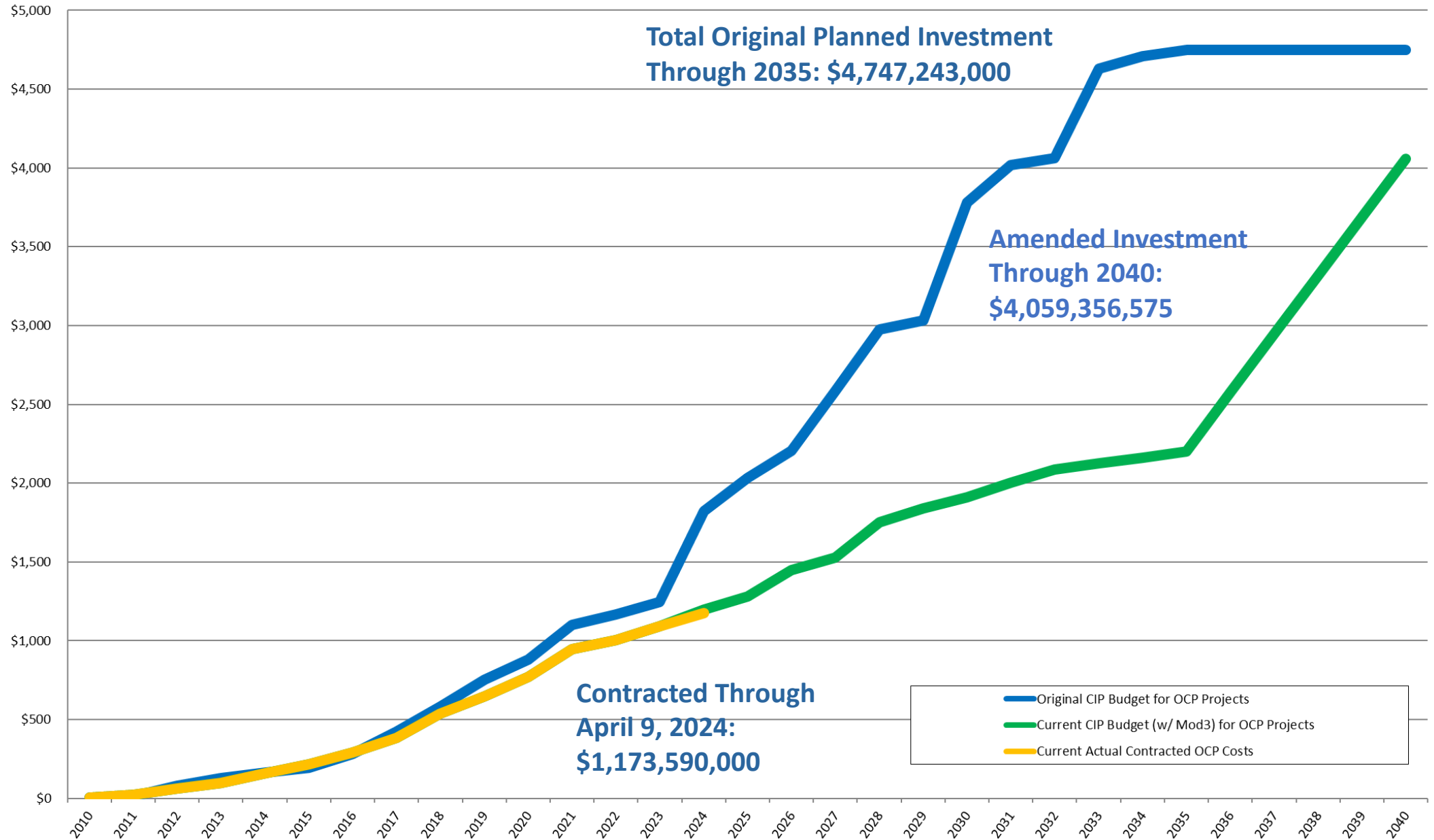
DRIVERS FOR INTEGRATED PLAN

- City's current Consent Decree-driven Overflow Control Program is scheduled for completion in 2040 (Remaining Investment ~ \$2.87B)
- October 2023: MDNR passed new plant effluent total phosphorus limit
- April 2024: EPA issued PFAS National Primary Drinking Water Regulation
- Lead & Copper Rule Service Line Replacement
- Studying need for Drinking Water Plant south of river
- Historical stormwater management & flood resiliency needs being compiled



Cumulative OCP Cash Flow Curve For Long-Term OCP (2010-2040)

Million Dollars



THANK YOU



A stylized map of the Greater Kansas City region, rendered in white lines on a dark blue background. The map shows a dense network of roads and highways, with a prominent grid-like pattern in the center. The lines vary in thickness, suggesting different types of roads or highways.

NUCA of Greater Kansas City Region

DANNY ANDERSON, President



SPECIAL THANKS TO OUR SPONSORS



PLATINUM SPONSORS



GOLD SPONSORS



SILVER SPONSORS

CONTRACTOR SOLUTIONS

EMERY SAPP & SONS

GENESIS ENVIRONMENTAL SOLUTIONS, INC.

NATIONAL TRENCH SAFETY

MCWANE DUCTILE

OLSSON

OLATHE WINWATER



Proceeds benefit Mid-America Assistance Coalition.
An organization advocating on behalf of low-income
utility customers.



